



---

# PHD SERIES QUICK START GUIDE

REF. # 202395  
REV 1.1

---



---

1 Komo Dr.  
Lakewood, NJ 08701  
Phone: 732-415-4400  
Website: <http://www.polymacusa.com>

## OPERATION MENU

SETUP	OPERATION	OPTIONS	ALARMS	CHEMICAL	PROCESS DATA
	<b>SETPOINT</b> 0 °F ACTUAL 0 °F A		RETRACT		
	<b>SETPOINT</b> 0 °F ACTUAL 0 °F R		NORMAL		
	<b>SETPOINT</b> 0 °F ACTUAL 0 °F HOSE			MOTOR	
PRESSURE A 0 PSI	PRESSURE R 0 PSI	TOTAL CYCLES 0		RESET	

SETUP	OPERATION	OPTIONS	11A	ALARMS	CHEMICAL	PROCESS DATA
1A	<b>SETPOINT</b> 2A °F ACTUAL 0 °F A		RETRACT			
3A	<b>SETPOINT</b> 4A °F ACTUAL 0 °F R		NORMAL			
5A	<b>SETPOINT</b> 6A °F ACTUAL 0 °F HOSE			MOTOR		
PRESSURE A 0 PSI	PRESSURE R 0 PSI	TOTAL CYCLES 0		10A		

### STARTUP

- PRESS IN AREA (2A) FOR POP UP KEYBOARD AND SET HEATER "A" SETPOINT.
- PRESS RED HEATER SYMBOL (1A) TO TURN HEATER "A" ON.
- PRESS IN AREA (4A) FOR POP UP KEYBOARD AND SET HEATER "R" SETPOINT.
- PRESS BLUE HEATER SYMBOL (3A) TO TURN HEATER "R" ON.
- PRESS IN AREA (6A) FOR POP UP KEYBOARD AND SET HOSE HEAT SETPOINT.
- PRESS HOSE SYMBOL (5A) TO TURN HOSE HEAT ON.
- PRESS MOTOR BUTTON (9A) TO TURN MOTOR ON.
- PRESS NORMAL BUTTON (8A) TO START PUMP CYCLE.

### SHUTDOWN/RETRACT

- PRESS NORMAL BUTTON (8A) TO STOP PUMP CYCLE.
- PRESS RETRACT BUTTON (7A) TO PLACE PUMP IN RETRACT MODE.
- PRESS NORMAL BUTTON (8A) ONCE AGAIN TO MOVE PUMP TO RETRACT POSITION.
- PRESS MOTOR BUTTON (9A) TO TURN MOTOR OFF.

### CYCLE COUNTER

- TO RESET CYCLE COUNTER PRESS RESET BUTTON (10A), CYCLES WILL RESET AT START OF NEXT CYCLE.

### SCREEN NAVIGATION

- TO NAVIGATE TO ANY SCREEN PRESS THE DESIRED SCREEN BUTTON IN AREA (11A) AND THE SCREEN NAME WILL TURN BLUE TO INDICATE THE CURRENT SCREEN.

## OPTIONS MENU

SETUP	OPERATION	OPTIONS	ALARMS	CHEMICAL	PROCESS DATA
OFF	PRESSURE BALANCE		COUNTDOWN COUNTER		OFF
RESET	0	PSI	0	0	SET CLEAR
INLET TEMPERATURE A 0 °F	TEMPERATURE	PRESSURE	TEMPERATURE	PRESSURE	INLET TEMPERATURE R 0 °F
INLET PRESSURE A 0 PSI	0	0	0	0	INLET PRESSURE R 0 PSI
	LOW LIMIT	LOW LIMIT	LOW LIMIT	LOW LIMIT	
	0	0	0	0	
	HIGH LIMIT	HIGH LIMIT	HIGH LIMIT	HIGH LIMIT	
	A		R		

SETUP	OPERATION	OPTIONS	ALARMS	CHEMICAL	PROCESS DATA
1B	PRESSURE BALANCE		COUNTDOWN COUNTER		7B
2B	3B	PSI	4B	5B	6B
INLET TEMPERATURE A 0 °F	8B				INLET TEMPERATURE R 0 °F
INLET PRESSURE A 0 PSI	9B	11B	13B	15B	INLET PRESSURE R 0 PSI
	LOW LIMIT	LOW LIMIT	LOW LIMIT	LOW LIMIT	
	10B	12B	14B	16B	
	HIGH LIMIT	HIGH LIMIT	HIGH LIMIT	HIGH LIMIT	
	A		R		

### PRESSURE BALANCE

- PRESSURE BALANCE CONTROL IS NOW PASSWORD PROTECTED THROUGH THE SETUP SCREEN.
- PRESS RED OFF BUTTON (1B) TO TURN PRESSURE BALANCE ON, BUTTON WILL TURN GREEN.
- PRESS IN AREA (3B) FOR POP UP KEYBOARD AND SET PRESSURE DIFFERENCE.
- PRESS IN AREA (2B) TO RESET PRESSURE BALANCE ALARM.

### COUNTDOWN COUNTER

- PRESS RED OFF BUTTON (7B) TO TURN COUNTDOWN COUNTER ON, BUTTON WILL TURN GREEN.
- PRESS IN AREA (4B) FOR POP UP KEYBOARD AND SET COUNTDOWN COUNTER.
- PRESS SET BUTTON (5B) TO SET COUNTER.
- PRESS CLEAR BUTTON (6B) TO CLEAR COUNTER TO 0.

### INLET MONITORING

- USE AREAS (9B AND 10B) TO SET LOW AND HIGH TEMPERATURE LIMITS FOR "A" SIDE.
- USE AREAS (11B AND 12B) TO SET LOW AND HIGH PRESSURE LIMITS FOR "A" SIDE.
- USE AREAS (13B AND 14B) TO SET LOW AND HIGH TEMPERATURE LIMITS FOR "R" SIDE.
- USE AREAS (15B AND 16B) TO SET LOW AND HIGH PRESSURE LIMITS FOR "R" SIDE.
- PRESS AREA (8B) TO TURN THIS FEATURE ON. THIS ENSURES THAT THE TEMPERATURES AND PRESSURES STAY WITHIN THESE PARAMETERS. IF THEY GO ABOVE OR BELOW THE SET VALUES AN ALARM WILL TRIGGER.

## ALARMS MENU

SETUP	OPERATION	OPTIONS	ALARMS	CHEMICAL	PROCESS DATA						
<b>FAULT</b>	REPLACE PUMP LUBE	<b>FAULT</b>	REPLACE HYDRAULIC OIL	<b>FAULT</b>	SERVICE Y-STRAINER	<b>FAULT</b>	REBUILD PUMPS				
RESET	RESET	RESET	RESET	<b>FAULT</b>	HOSE TEMPERATURE	<b>FAULT</b>	OVER PRESSURE A	<b>FAULT</b>	OVER PRESSURE R	<b>FAULT</b>	TEMPERATURE SENSING UNIT
<b>FAULT</b>	OVER TEMP HEATER	<b>FAULT</b>	PRESSURE BALANCE	<b>FAULT</b>	OFF RATIO	<b>FAULT</b>	BARREL LOW				
<b>FAULT</b>	INLET A TEMPERATURE	<b>FAULT</b>	INLET R TEMPERATURE	<b>FAULT</b>	INLET A PRESSURE	<b>FAULT</b>	INLET R PRESSURE				
MANUAL HOSE HEAT CONTROL <span style="margin-left: 20px;">OFF</span> <span style="margin-left: 20px;">0</span>											

SETUP	OPERATION	OPTIONS	ALARMS	CHEMICAL	PROCESS DATA						
<b>FAULT</b>	REPLACE PUMP LUBE	<b>FAULT</b>	REPLACE HYDRAULIC OIL	<b>FAULT</b>	SERVICE Y-STRAINER	<b>FAULT</b>	REBUILD PUMPS				
<b>1C</b>	<b>2C</b>	<b>3C</b>	<b>4C</b>	<b>FAULT</b>	HOSE TEMPERATURE	<b>FAULT</b>	OVER PRESSURE A	<b>FAULT</b>	OVER PRESSURE R	<b>FAULT</b>	TEMPERATURE SENSING UNIT
<b>FAULT</b>	OVER TEMP HEATER	<b>FAULT</b>	PRESSURE BALANCE	<b>FAULT</b>	OFF RATIO	<b>FAULT</b>	BARREL LOW				
<b>FAULT</b>	INLET A TEMPERATURE	<b>FAULT</b>	INLET R TEMPERATURE	<b>FAULT</b>	INLET A PRESSURE	<b>FAULT</b>	INLET R PRESSURE				
MANUAL HOSE HEAT CONTROL <span style="margin-left: 20px;"><b>5C</b></span> <span style="margin-left: 20px;"><b>6C</b></span>											

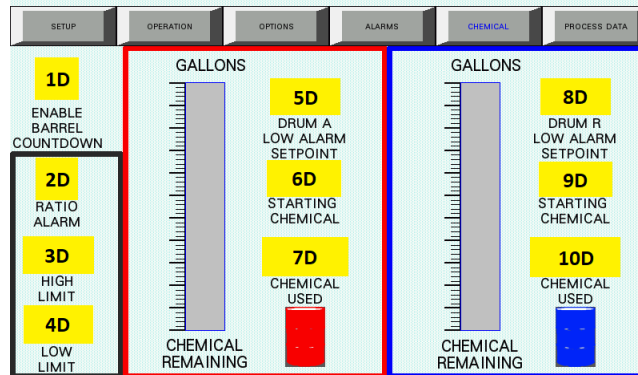
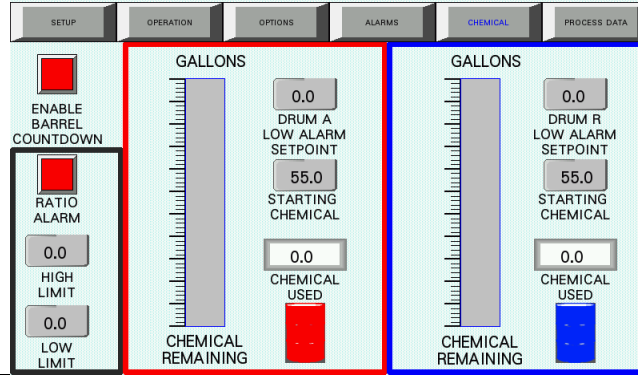
### ALARMS

- FAULT WILL FLASH TO INDICATE SERVICE REQUIRED OR A FAULT, WHEN FAULT IS CORRECTED THE FAULT WILL RETURN TO SOLID.
- THE TOP FOUR ALARMS ARE CYCLE BASED SO AFTER THE MAINTENECE IS PREFORMED, PRESS AREAS (1C, 2C, 3C OR 4C) TO RESET THE COUNTER FOR THE CORRESPONDING ALARM.

### MANUAL HOSE HEAT

- PRESS IN AREA (6C) FOR POP UP KEYBOARD AND SET HOSE HEAT SETPOINT.
- TO TURN ON THE MANUAL HOSE HEAT SETTING, PRESS THE ON/OFF BUTTON (5C).
- THIS OPTION WILL ONLY BE AVAILABLE WHEN A TEMPERATURE SENSING UNIT FAULT IS ACTIVE AND IF THE PROPER LOGIN IS ACTIVE.

## CHEMICAL MENU



### CHEMICAL CONSUMPTION

- AREA (7D) SHOWS CALCULATED CHEMICAL CONSUMED BASED ON TOTAL CYCLES FOR CHEMICAL "A" OR MEASURED CHEMICAL CONSUMED WHEN FLOW METER OPTION IS ACTIVE.
- AREA (10D) SHOWS CALCULATED CHEMICAL CONSUMED BASED ON TOTAL CYCLES FOR CHEMICAL "R" OR MEASURED CHEMICAL CONSUMED WHEN FLOW METER OPTION IS ACTIVE.
- INPUT CHEMICAL REMAINING IN BARREL "A" BY PRESSING BUTTON IN AREA (6D).
- INPUT CHEMICAL REMAINING IN BARREL "R" BY PRESSING BUTTON IN AREA (9D).
- INPUT ALARM LEVEL FOR LOW FLUID LEVEL IN BARREL "A" BY PRESSING BUTTON IN AREA (5D).
- INPUT ALARM LEVEL FOR LOW FLUID LEVEL IN BARREL "R" BY PRESSING BUTTON IN AREA (8D).
- WHEN EITHER CHEMICAL REACHES THE ALARM LEVEL, THE PUMPS WILL STOP.
- BAR GRAPH WITHIN THE RED AREA WILL DISPLAY REMAINING CHEMICAL IN BARREL "A".
- BAR GRAPH WITHIN THE BLUE AREA WILL DISPLAY REMAINING CHEMICAL IN BARREL "R".
- ACTIVATE REMAINING CHEMICAL LEVELS MEASUREMENT BY PRESSING BUTTON IN AREA (1D). RED MEANS THE COUNTDOWN IS NOT ACTIVE.
- "CHEMICAL USED" WILL BE DISPLAYED AND CALCULATED FOR BOTH CHEMICALS WHETHER THE BARREL COUNTDOWN OPTION IS ACTIVE OR NOT.
- THE "RATIO ALARM" SECTION IN AREA (2D) ALLOWS THE USER TO SET AN UPPER AND LOWER LIMIT FOR MATERIAL RATIO. IF A RATIO OUTSIDE OF THOSE VALUES IS DETECTED, THE MACHINE WILL STOP PUMPING.

## PROCESS DATA MENU

2020/02/25 (TUE) 10:17:34 AM

SETUP OPERATION OPTIONS ALARMS CHEMICAL PROCESS DATA

JOB NUMBER  HISTORY DATA QUERY BY DATE (YYYYMMDD)

PROCESS DATA

No.	Date	Time	JOB NUMBER	INLET TEMP A	INLET TEMP R	IN

ALARM DATA

No.	Date	Time	Status
3	19/11/04	13:33	2

USB MODE

2020/02/25 (TUE) 10:17:34 AM

SETUP OPERATION OPTIONS ALARMS CHEMICAL PROCESS DATA

JOB NUMBER  HISTORY DATA QUERY BY DATE (YYYYMMDD)

PROCESS DATA

3E

ALARM DATA

4E

5E

### PROCESS DATA

- ENTER JOB NUMBER IN AREA (1E) TO TAG DATA TO SPECIFIC JOB.
- PRESS IN AREA (2E) FOR POP UP KEYBOARD AND ENTER DATE IN THE FORMAT SHOWN TO SEE THE HISTORICAL DATA.
- NOTE: CURRENT DATE MUST BE ENTERED IN YYYYMMDD FORMAT IN ORDER TO SEE DATA, AND USB STICK MUST BE INSTALLED IN USB PORT IN FRONT OF MACHINE.
- AREA (3E) DISPLAYS THE DATA FOR DATE ENTERED IN THE QUERY IF AVAILABLE.

### ALARM DATA

- AREA (4E) DISPLAYS ALARM DATA IN REAL TIME.

### USB STATUS

- AREA (5E) DISPLAYS THE PRESENCE OF USB STICK, WHEN REMOVING THE USB STICK PRESS THE BUTTON IN AREA (5E).

## SETUP LOGIN MENU

USER ACCESS LOGIN

USER NAME

ACCESS PASSWORD

Login Logout

USER LEVEL LOGIN

LEVEL PASSWORD

USER ACCESS LOGIN

USER NAME **1F**

ACCESS PASSWORD **2F**

**3F** **4F**

USER LEVEL LOGIN

LEVEL PASSWORD **5F**


### SETUP LOGIN SCREEN

- IN ORDER TO ACCESS PASSWORD PROTECTED OPTIONS SUCH AS PRESSURE BALANCE CONTROL AND MANUAL HOSE HEAT, A REGISTERED LOGIN IS REQUIRED.
- PRESS THE SETUP BUTTON TO BRING UP THE “USER ACCESS LOGIN” POP UP.
- PRESS IN THE CENTER OF THE “USER NAME” AREA (1F), TO INPUT USER NAME “**OWNER**” AFTER THE KEYBOARD POPS UP.
- THE USER NAME MUST BE IN ALL CAPS WITH THE SPACE BETWEEN THE WORDS.
- PRESS IN CENTER OF THE “ACCESS PASSWORD” AREA (2F), TO INPUT ACCESS PASSWORD “**998**” AFTER THE NUMBER PAD POPS UP.
- PRESS IN THE CENTER OF THE “LEVEL PASSWORD” AREA (5F), TO INPUT THE LEVEL PASSWORD “**998**” AFTER THE NUMBER PAD POPS UP.
- PRESS THE LOGIN BUTTON IN AREA (3F) TO LOGIN.
- PRESSURE BALANCE CONTROL AND MANUAL HOSE HEAT ARE NOW AVAILABLE.
- PRESS THE LOGOUT BUTTON IN AREA (4F) TO LOGOUT AND NO LONGER ALLOW CHANGES TO THE PRESSURE BALANCE CONTROL OR MANUAL HOSE HEAT.

### SETUP LOGIN SCREEN

- IN ORDER TO ACCESS THE SETUP MENU, A REGISTERED LOGIN IS REQUIRED.
- PRESS THE SETUP BUTTON TO BRING UP THE “USER ACCESS LOGIN” POP UP.
- PRESS IN THE CENTER OF THE “USER NAME” AREA (1F), TO INPUT USER NAME “**TECH SUPPORT**” AFTER THE KEYBOARD POPS UP.
- THE USER NAME MUST BE IN ALL CAPS WITH THE SPACE BETWEEN THE WORDS.
- PRESS IN CENTER OF THE “ACCESS PASSWORD” AREA (2F), TO INPUT ACCESS PASSWORD “**5613**” AFTER THE NUMBER PAD POPS UP.
- PRESS IN THE CENTER OF THE “LEVEL PASSWORD” AREA (5F), TO INPUT THE LEVEL PASSWORD “**5613**” AFTER THE NUMBER PAD POPS UP.
- PRESS THE LOGIN BUTTON IN AREA (3F) TO LOGIN.

## SETUP MENU

FACTORY SETUP	SETUP	OPERATION	LOGOUT
LANGUAGE  ENGLISH	°F   PSI   GALLONS <div style="border: 1px solid black; padding: 2px; display: inline-block;">ENGLISH</div>		CHANGE LEVEL 1 PASSWORD <div style="border: 1px solid black; padding: 2px; display: inline-block;">998</div>
2020/02/25 (TUE) 10:14:29 AM		SET PLC CLOCK	
MONTH <div style="border: 1px solid black; padding: 2px; display: inline-block;">2</div>	DAY <div style="border: 1px solid black; padding: 2px; display: inline-block;">25</div>	YEAR <div style="border: 1px solid black; padding: 2px; display: inline-block;">2020</div>	0/ 0/0      0: 0:0
HOUR <div style="border: 1px solid black; padding: 2px; display: inline-block;">10</div>	MINUTE <div style="border: 1px solid black; padding: 2px; display: inline-block;">14</div>	SECOND <div style="border: 1px solid black; padding: 2px; display: inline-block;">29</div>	MONTH <div style="border: 1px solid black; padding: 2px; display: inline-block;">0</div>
			DAY <div style="border: 1px solid black; padding: 2px; display: inline-block;">0</div>
			YEAR <div style="border: 1px solid black; padding: 2px; display: inline-block;">0</div>
			HOUR <div style="border: 1px solid black; padding: 2px; display: inline-block;">0</div>
			MINUTE <div style="border: 1px solid black; padding: 2px; display: inline-block;">0</div>
			SECOND <div style="border: 1px solid black; padding: 2px; display: inline-block;">0</div>

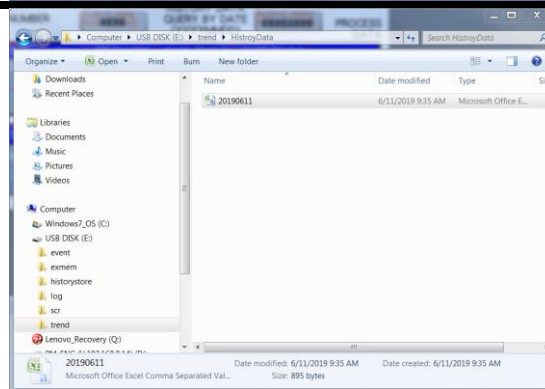
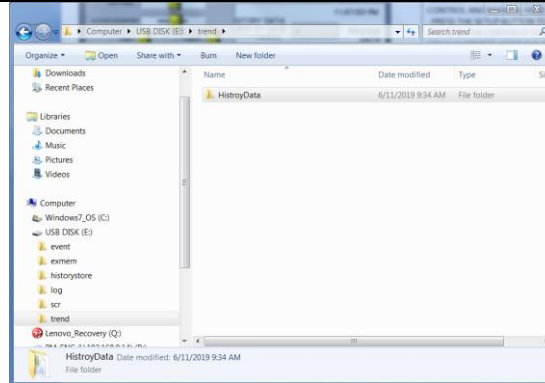
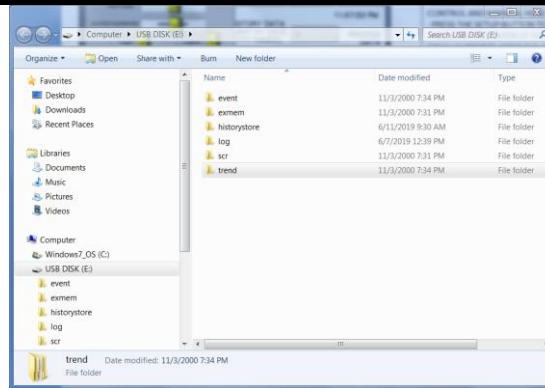
FACTORY SETUP	SETUP	OPERATION	LOGOUT
LANGUAGE <div style="border: 1px solid black; padding: 5px; display: inline-block; background-color: yellow;">1G</div>	°F   PSI   GALLONS <div style="border: 1px solid black; padding: 2px; display: inline-block; background-color: yellow;">2G</div>		CHANGE LEVEL 1 PASSWORD <div style="border: 1px solid black; padding: 2px; display: inline-block; background-color: yellow;">3G</div>
2020/02/25 (TUE) 10:14:29 AM		<div style="border: 1px solid black; padding: 5px; display: inline-block; background-color: yellow;">10G</div>	
MONTH <div style="border: 1px solid black; padding: 2px; display: inline-block; background-color: yellow;">4G</div>	DAY <div style="border: 1px solid black; padding: 2px; display: inline-block; background-color: yellow;">5G</div>	YEAR <div style="border: 1px solid black; padding: 2px; display: inline-block; background-color: yellow;">6G</div>	0/ 0/0      0: 0:0
HOUR <div style="border: 1px solid black; padding: 2px; display: inline-block; background-color: yellow;">7G</div>	MINUTE <div style="border: 1px solid black; padding: 2px; display: inline-block; background-color: yellow;">8G</div>	SECOND <div style="border: 1px solid black; padding: 2px; display: inline-block; background-color: yellow;">9G</div>	MONTH <div style="border: 1px solid black; padding: 2px; display: inline-block; background-color: yellow;">11G</div>
			DAY <div style="border: 1px solid black; padding: 2px; display: inline-block; background-color: yellow;">12G</div>
			YEAR <div style="border: 1px solid black; padding: 2px; display: inline-block; background-color: yellow;">13G</div>
			HOUR <div style="border: 1px solid black; padding: 2px; display: inline-block; background-color: yellow;">14G</div>
			MINUTE <div style="border: 1px solid black; padding: 2px; display: inline-block; background-color: yellow;">15G</div>
			SECOND <div style="border: 1px solid black; padding: 2px; display: inline-block; background-color: yellow;">16G</div>

### SETUP SCREEN

- CLICK IN AREA (1G) TO TOGGLE BETWEEN AVAILABLE LANGUAGES.
- CLICK IN AREA (2G) TO TOGGLE BETWEEN AVAILABLE UNITS.
- TO CHANGE THE ACCESS PASSWORD CLICK AREA (3G) THEN INPUT NEW PASSWORD.
- PRESS AREAS (4G, 5G, 6G, 7G, 8G AND 9G) TO SET THE TIME AND DATE TO BE DISPLAYED ON THE SCREEN.
- PRESS AREAS (11G, 12G, 13G, 14G, 15G AND 16G) TO SET THE TIME AND DATE INTERNALLY.
- **AFTER INPUTTING TIME AND DATE VALUES TO AREAS (11G, 12G, 13G, 14G, 15G AND 16G), PRESSING AREA (10G) WILL SET BOTH THE INTERNAL AND DISPLAY TIME AND DATE TO THOSE VALUES.**



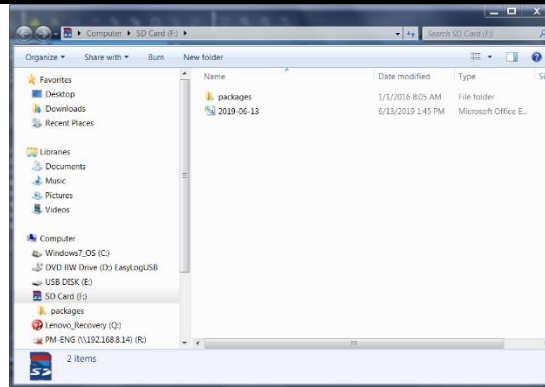
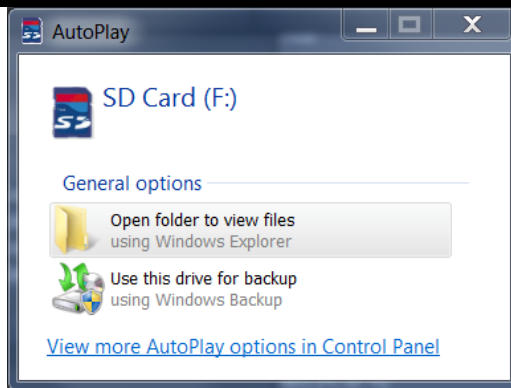
## ACCESSING DATA VIA USB



### ACCESSING USB DATA

- PUSH THE "USB MODE" BUTTON IN THE "PROCESS DATA" MENU SO IT READS "REMOVE USB".
- REMOVE THE USB STICK FROM THE FRONT OF THE MACHINE AND INSERT INTO A LAPTOP OR DESKTOP COMPUTER.
- OPEN THE FILES ON THE USB STICK.
- OPEN THE "trend" FOLDER.
- OPEN THE "HistoryData" FOLDER.
- DATA FILES FOR A PARTICULAR DAY WILL BE NAMED IN "YYYYMMDD" FORMAT AS SHOWN IN AREA (3) WHERE "YYYY" IS THE YEAR, "MM" IS THE MONTH, AND "DD" IS THE DAY. FOR EXAMPLE, "20190611" WILL CONTAIN DATA FOR JUNE 11, 2019.

## ACCESSING DATA VIA SD CARD



1	Date and Time	Inlet Temperature A	Inlet Temperature B	Heater Temp A	Heater Temp B	Inlet Pressure A	Inlet Pressure B	Cell Pressure A	Cell Pressure B	Heater Temp A SP	Heater Temp B SP	Flow Head	SP	Current
2	2019-06-13 18:27:09.130000000	32.767	32.767	176	187	177	0	0	0	0	0	0	0	0
3	2019-06-13 18:28:21.260000000	32.767	32.767	175	186	176	0	0	3	7	0	0	0	0
4	2019-06-13 18:29:53.290000000	32.767	32.767	175	186	176	0	0	1	3	0	0	0	0
5	2019-06-13 18:29:31.260000000	32.767	32.767	174	185	175	0	0	1	3	0	0	0	0
6	2019-06-13 18:29:51.300000000	32.767	32.767	174	185	175	0	0	1	3	0	0	0	0
7	2019-06-13 18:30:21.300000000	32.767	32.767	173	184	175	0	0	1	3	0	0	0	0
8	2019-06-13 18:30:51.240000000	32.767	32.767	173	184	175	0	0	1	3	0	0	0	0
9	2019-06-13 18:31:21.180000000	32.767	32.767	172	183	175	0	0	1	3	0	0	0	0
10	2019-06-13 18:31:51.240000000	32.767	32.767	172	183	174	0	0	1	3	0	0	0	0
11	2019-06-13 18:32:21.180000000	32.767	32.767	171	182	174	0	0	1	3	0	0	0	0
12	2019-06-13 18:32:51.300000000	32.767	32.767	171	181	173	0	0	1	3	0	0	0	0
13	2019-06-13 18:33:21.180000000	32.767	32.767	171	181	173	0	0	1	3	0	0	0	0
14	2019-06-13 18:33:51.240000000	32.767	32.767	170	181	173	0	0	12	11	0	0	0	0
15	2019-06-13 18:34:21.300000000	32.767	32.767	169	180	170	0	0	71	71	0	0	0	0
16	2019-06-13 18:34:51.240000000	32.767	32.767	171	182	180	0	0	223	220	0	0	0	0
17	2019-06-13 18:35:21.180000000	32.767	32.767	169	179	175	0	0	91	87	0	0	0	0
18	2019-06-13 18:35:51.360000000	32.767	32.767	169	178	173	0	0	88	88	0	0	0	0
19	2019-06-13 18:36:21.180000000	32.767	32.767	168	177	172	0	0	88	88	0	0	0	0
20	2019-06-13 18:36:51.240000000	32.767	32.767	169	176	171	0	0	865	867	0	0	0	0
21	2019-06-13 18:37:21.300000000	32.767	32.767	169	175	178	0	0	820	776	0	0	0	0
22														
23														
24														
25														
26														
27														
28														
29														
30														
31														
32														

## ACCESSING SD CARD DATA

- TURN THE POWER TO THE MACHINE OFF.
- OPEN THE CONSOLE TOP BY REMOVING THE TWO THUMBSCREWS ON EITHER SIDE OF THE CONSOLE.
- OPEN THE LATCH TO THE PLC TO ACCESS THE SD CARD.
- GENTLY PUSH IN THE SD CARD TO REMOVE IT FROM THE PLC.
- INSERT THE SD CARD INTO THE APPROPRIATE PORT ON A LAPTOP/DESKTOP COMPUTER, OR INSERT THE SD CARD INTO THE APPROPRIATE USB ADAPTER.
- OPEN THE FILES ON THE SD CARD.
- DATA FILES FOR A PARTICULAR DAY WILL BE NAMED IN “YYYYMMDD” FORMAT AS SHOWN IN AREA (2) WHERE “YYYY” IS THE YEAR, “MM” IS THE MONTH, AND “DD” IS THE DAY. FOR EXAMPLE, “20190611” WILL CONTAIN DATA FOR JUNE 11, 2019.
- DATA WILL BE DISPLAYED IN AN EXCEL SHEET AS SHOWN.